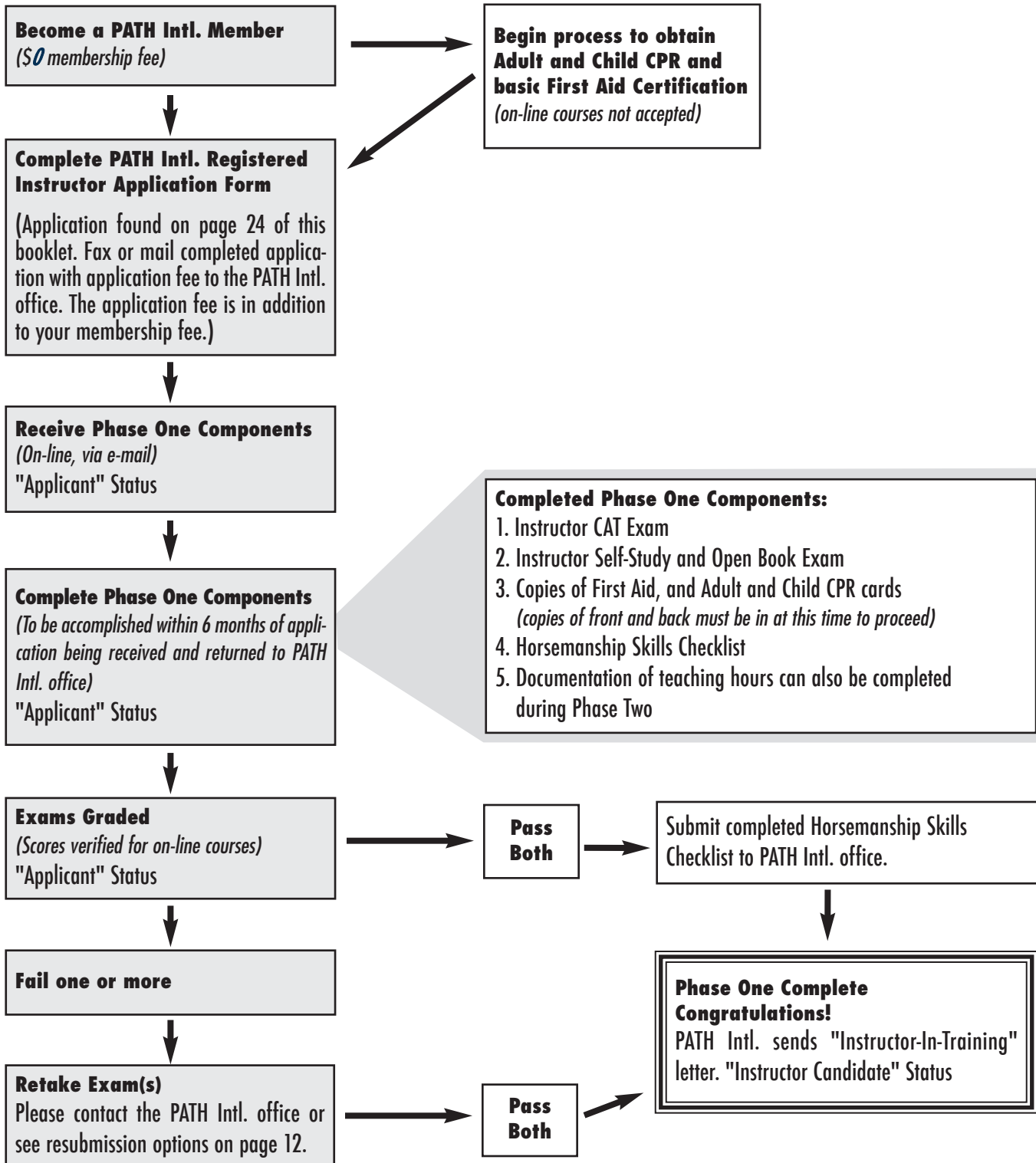


PHASE ONE

Professional Association of Therapeutic Horsemanship International Workshop and Certification Process

This phase takes six months to complete and is coordinated by the PATH Intl. office.



PHASE TWO

Professional Association of Therapeutic Horsemanship International Workshop and Certification Process

This phase takes up to 12 months to complete and is coordinated by the Host Site.

Instructor Candidate

Contacts Host Site

Inquire about PATH Intl. Registered Instructor On-Site Workshop and/or Certification (OSWC) and obtain a registration form.



Completes OSWC Registration Form

Send form and "Instructor-In-Training" letter back to Host Site with registration. Must be registered at least 30 days prior to start of the certification.



Instructor Candidate receives Phase Two forms from Host Site.



Submit final Phase Two forms to Host Site two weeks prior to OSWC.



Attend OSWC at Host Site.

(Workshop may be completed in conjunction with certification or completed at an earlier date.)



Receive Official Letter from PATH Intl.

The letter will contain your status, Pass/Fail, with resubmission options.



Please be sure your 25 hours of mounted group teaching are complete if you plan to attend the certification portion along with the workshop.

Phase Two Forms obtained from the Host Center

1. On-Site Registration form
Copies of: PATH Intl. membership card, First Aid card, Adult and Child CPR card (front and back)
2. Riding Instructor Resume
3. Personal Reference
4. Professional Reference
5. Essay Questions
6. Documentation of Mounted Teaching Hours (Instructor Candidate may already have this form in progress from Phase One)
7. Emergency Medical Treatment forms
8. PATH Intl. Liability Release form
9. Center Liability Release form
10. Center Confidentiality form

Keep a copy of all forms sent to Host Site.