

  
**Hospitality in EAS**  
 A practice that moves the margins  





---

---

---

---

---

---

---

---

---

  
**What is a practice?**  
 Versus technique  


---

 Historical  
 Social  
 Universal  
 Local  
 Goods internal to the practice - participatory knowledge  
  
*The most meaningful practices address fundamental human needs*

---

---

---

---

---

---

---

---

*Defamiliarize the Familiar or Complexity the Common Sense  
 "Disability"*

<p><small>ROSEMARIE GARLAND-THOMSON</small></p> <p>"Expose values that have become neutral in an environment created to accommodate [them]."</p> <p><i>Extraordinary Bodies, p. 24</i></p>	<p><small>SIMI LINTON</small></p> <p>"A disability studies perspective adds a critical dimension to thinking about issues such as autonomy, competence, wholeness, independence/dependence, health, physical appearance, aesthetics, community, and notions of progress and perfection."</p> <p><i>Disability Studies: Expanding the Parameters of Disability, p. 5.</i></p>
--	--

---

---

---

---

---

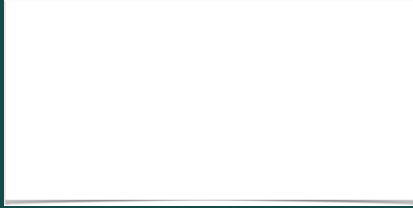
---

---

---

### What is disability?

Medical model, strong social model, US social model (minority group), cultural model, mannequin models...



---

---

---

---

---

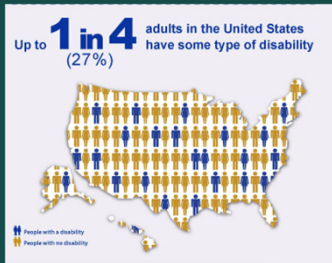
---

---

---

“an unsurprising aspect of being human”

- Living life as expert life-hackers in a world not designed for them
- Ramps and Social Ramps



<https://www.cdc.gov/ncbddd/disabilityandhealth/infographic-disability-impacts-all.html>

---

---

---

---

---

---

---

---

### Ableism

“Ableism denotes the ideology of a healthy body, a normal mind, appropriate speed of thought, and acceptable expressions of emotion. Key to a system of ableism are two elements: the concept of the normative (and the normal individual); and the enforcement of a divide between a “perfected” or developed humanity and the aberrant, unthinkable, underdeveloped, and therefore not really human”

Fiona Kumari Campbell “Ability” in *Keywords for Disability Studies*, p. 13

---

---

---

---

---

---

---

---

### "Dis-abling"

"If it's a level playing field, I die"  
Inclusion versus belonging



---

---

---

---

---

---

---

---

### Horses don't lie

How do the stories we tell about our riders valorize them and create a new narrative about "disability"?

Silk sees what many others miss



---

---

---

---

---

---

---

---

### How does ableism get in the way of hospitality?

- People with disabilities are typically envisioned as "guests" rather than "hosts"
- Ableism suggests that in order to participate in the practice of hospitality as a host one must possess particular abilities and competencies.
- People with disabilities have to "misfit" into spaces not created for them (expert life-hackers).

---

---

---

---

---

---

---

---

Jung Young Lee, *Marginality: The Key to Multicultural Theology*

"Marginality has no separate existence of its own" (47).



---

---

---

---

---

---

---

---

How do we marginalize people?

- Homogenize
- Colonize
- Demonize
- Romanticize
- Pluralize

---

---

---

---

---

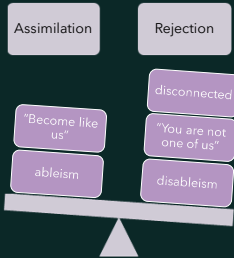
---

---

---



### Hospitality



---

---

---

---

---

---

---

---



Henri Nouwen

" We will never believe that we have anything to give unless there is someone who is able to receive. Indeed, we discover our gifts in the eyes of the receiver"

*Reaching Out, p. 61*

---

---

---

---

---

---

---

---

## Hospitality

A practice that moves the margins



---

---

---

---

---

---

---

---

## Discussion

- Is your center one where students are included or where they belong?
- What are some ways that people with disabilities might be unintentionally marginalized at your center?

(homogenized, colonized, demonized, romanticized, pluralized)

---

---

---

---

---

---

---

---

For more...

[benjamin@westernsem.edu](mailto:benjamin@westernsem.edu)



Center for Disability and Ministry

---

---

---

---

---

---

---